

### Connecting to the power supply:

The LED50W5MARC , LED50WMP and LED50WDHLO LED floodlight is fitted with a standard 110v~16amp industrial plug. Before using the LED floodlight, inspect the mains lead and plug to ensure that neither is damaged. If any damage is visible have the floodlight inspected / repaired by a suitably qualified person. If it is necessary to replace the plug it should only be with an equivalent plug and fitted by a qualified electrician.

### ELECTRICAL INSTRUCTIONS

The LED50WHEAD LED floodlight comes with no cable and no plug fitted and is designed to be wired into a junction box or similar, consult an approved electrician for advice.

**Warning:** Never connect live or neutral wires to the earth terminal of the junction box, or similar. If in doubt consult a qualified electrician.

**Note:** Always make sure the mains supply is of the correct voltage and the correct fuse protection is used. In the event of replacing the fuse always replace the fuse with the same value as the original.

**Note:** If an extension lead is required in order to reach the mains supply; ensure that this tool is rated for the correct voltage and fuse rating.

**Note:** The cross section of any extension leads should be checked so that it is of sufficient size so as to reduce the chances of voltage drops.

### TECHNICAL SPECIFICATION

Part No.	LED50WHEAD	LED50W5MARC	LED50WMP	LED50WDHLO
Input Voltage	84-265V ~ 50Hz	84-265V ~ 50Hz	84-265V ~ 50Hz	84-265V ~ 50Hz
Power	50W	50W	50W	2x50W
Lumens	4000Lm	4000Lm	4000Lm	2x4000Lm
Viewing Angle	120°	120°	120°	120°
Protection	IP65	IP65	IP65	IP65

### MAINTENANCE

The floodlight needs very little maintenance.

- Clean the floodlight with a dry, dust-free cloth. **DO NOT** use abrasives or solvents to clean the floodlight.
- Keep the glass clean for best performance.
- There are no serviceable parts within the floodlight.
- Cleaning and maintenance should only be carried out when the light is disconnected from its power supply.



## ELITE LED WORK LIGHT



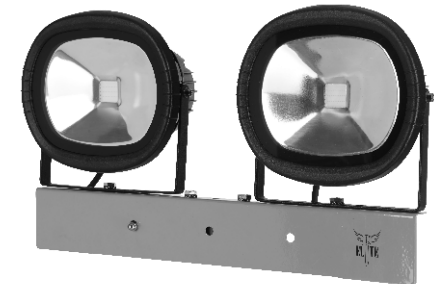
LED50WHEAD



LED50W5MARC



LED50WMP



LED50WDHLO



The Hire Supply Company UK Limited  
Sheet Stores Industrial Estate,  
Long Eaton, Nottingham, NG10 1AU, England  
Tel 0845 309 0707  
www.hscuk.co.uk

## SAFETY INSTRUCTIONS

**Important:** Please read the following instructions carefully, *failure to do so could lead to serious personal injury and / or damage to the LED floodlight.*

When using your LED floodlight, basic safety precautions should always be followed to reduce the risk of personal injury and/or damage to the LED floodlight.

Read all of these instructions before operating the LED floodlight and save this user manual for future reference.

The LED floodlight should not be modified or used for any application other than that for which it was designed.

This LED floodlight is designed to provide energy saving, portable light.

If you are unsure of its relative applications do not hesitate to contact us and we will be more than happy to advise you.

Always check that the glass is not damaged before each operation.

Always operate the LED floodlight safely and correctly.

**KNOW YOUR LED FLOODLIGHT:** Read the owner's manual and labels affixed to the LED floodlight. Learn its applications and limitations as well as the potential hazards specific to it.

**KEEP CHILDREN AND UNTRAINED PERSONNEL AWAY FROM THE WORK AREA:**

All visitors should be kept at a safe distance from the work area.

**STORE THE LED FLOODLIGHT SAFELY WHEN NOT IN USE:** The LED floodlight should be stored in a dry location and disconnected from the mains supply, and out of the reach of children.

**PROTECT YOURSELF FROM ELECTRICAL SHOCK:** When working with the LED floodlight, avoid contact with any earthed items (e.g. pipes, radiators, hobs and refrigerators, etc.). It is advisable wherever possible to use an RCD (residual current device) at the mains socket.

**STAY ALERT:** Always watch what you are doing and use common sense. Do not operate the LED floodlight when you are tired or under the influence of alcohol or drugs.

**DISCONNECT THE LED FLOODLIGHT FROM THE MAINS SUPPLY:** When not in use, before servicing or cleaning etc.

**DO NOT ABUSE THE LEAD:** Never attempt to move the LED floodlight by the lead or pull it to remove the plug from the mains socket. Keep the lead away from heat, oil and sharp edges. If the lead is damaged, it must be replaced with the manufacturers' original part, this will avoid any unwanted hazards.

**CHECK FOR DAMAGED PARTS:** Before every use of the LED floodlight, parts that are damaged should be carefully checked to determine that it will operate correctly and perform its intended function. Check for breakage of parts, and any other conditions that may affect its operation. Glass or other parts that are damaged should be correctly repaired or replaced by an authorised service center or qualified electrician, failure to do this will invalidate your warranty and could result in a serious injury.

**MAINTAIN THE LED FLOODLIGHT WITH CARE:** Keep the glass clean for the best and safest performance.

**USE THE RIGHT TOOL:** Do not use the LED floodlight to do a job for which it was not designed.

**DO NOT USE OR OPERATE THE LED FLOODLIGHT IN AN EXPLOSIVE ATMOSPHERE:**

Do not use the LED floodlight in the presence of flammable liquids, gases, dust or other combustible sources.

**HAVE YOUR LED FLOODLIGHT REPAIRED BY A QUALIFIED PERSON:** Repairs should only be carried out by qualified persons using original spare parts, otherwise this may result in considerable danger to the light.

**DO NOT** dismantle, tamper with or use the LED floodlight without the glass and covers fitted as this maybe dangerous and will invalidate the warranty.

- Stop operation immediately if you notice anything abnormal.
- Do not modify the LED floodlight to do tasks other than those intended.
- Severe permanent eye injury can result from staring directly at the LED floodlight.
- **DO NOT** install the light where it is likely to be knocked or hit.
- **DO NOT** use in or near places such as swimming pools, ponds, sauna's, bathroom's shower room's or similar locations.

**Danger / Caution:** Never look directly into the light or aim it towards another person, as this could cause eye damage.

**Note:** If the LED floodlight is to be used in a place of work all rules and laws etc. relating the use of portable electrical appliances should be followed.

**CAUTION:** The warnings and cautions mentioned in this user manual can not cover all possible conditions and situations that may occur. It must be understood by the operator that common sense and caution are factors which can not be built into this product, but must be applied.

## ELECTRICAL CONNECTION

**WARNING!** It is the responsibility of the owner and the operator to read, understand and comply completely with the following:

You must check all electrical products, before use, to ensure that they are safe.

You must inspect power cables, plugs, sockets and any other connectors for wear or damage.

You must ensure that the risk of electrical shock is minimized by the installation of appropriate safety devices; A Residual Current Circuit Breaker (RCCB) should be incorporated in the main distribution board. We also recommend that a residual current device (RCD) is used. It is particularly important to use an RCD with portable products that are plugged into a supply.