

# MAXIM 3000

The revisited Maxim 3000 is a blow-molded toilet, with doublewalls and interlocking panels, creating a cabana with unmatched strength and durability. The fit and finish of the Maxim 3000 has also been improved by using 3 identical walls and a full base-to-cabana overlap, creating consistent alignment during assembly. The ultra-smooth walls with interlocking corners, create a beautiful exterior and interior surface that is simple to clean and maintain. An added benefit to end-users and operators is the new vent pipe, with built-in coat/purse hanger and shelf, conveniences not found in most standard toilets. That's because a Maxim 3000 offers more than a standard toilet.



## Specifications

Dimensions (HxWxD): 2.29 m x 1.12 m x 1.22 m  
Weight: 85.8 kg  
Standard tank volume: 265 L

## Colours

Standard



**ROI FREE**  
REWARDS  
with **12 000** ROI points  
(without flushing system)  
with **20 000** ROI points  
(with Flip Top flushing system)

## Flushing Systems



### BASIC FLUSH KIT

Recirculating flushing system (hand or foot pump)



### FLIP TOP

Recirculating flushing system (hand or foot pump)

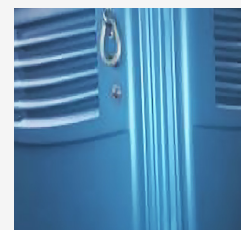
## Handwash and Additional Options



**Small bowl**  
Capacity: 32.5 L



**Full Forearm**  
Capacity: 32.5 L



**Kit to lift the Maxim**  
with an empty tank



**Kit to lift the Maxim**  
with a full tank

Additionally, we also offer further **accessories** such as: soap dispensers, towel dispensers, corner shelf, gender indicator, mirror, 4-roll toilet paper holder, solar light and solar fan.