

SPECIFICATIONS

*With rubber shoe type

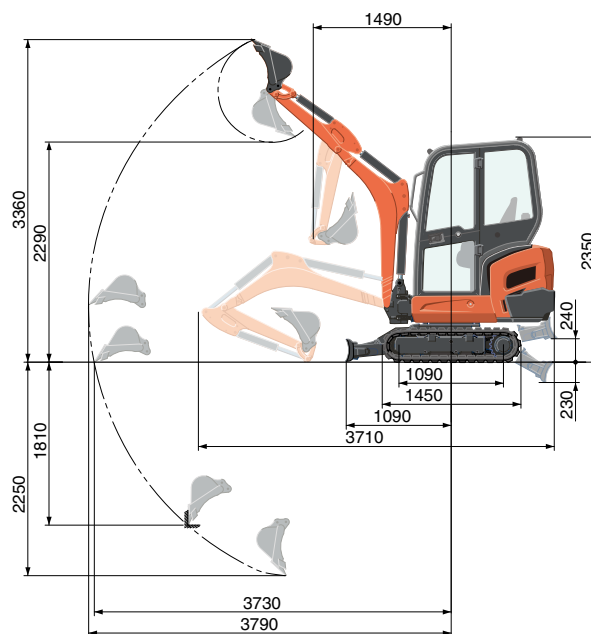
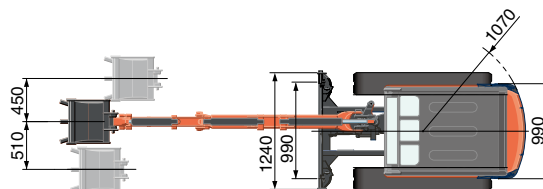
Model	KX016-4			
Machine weight* ¹ (cabin / canopy)	kg	1540 / 1490		
Operating weight* ² (cabin / canopy)	kg	1615 / 1565		
Bucket capacity, std. SAE/CECE	m ³	0.035		
Bucket width (with / without side teeth)	mm	422 / 402		
Engine	Model	D782-BH		
	Type	Water-cooled, diesel engine E-TVCS		
	Output ISO9249	PS/rpm	13 / 2300	
		kW/rpm	9.6 / 2300	
	Number of cylinders	3		
	Bore × Stroke	mm	67 × 73.6	
Displacement	cc	778		
Overall length	mm	3710		
Overall height (cabin / canopy)	mm	2350 / 2330		
Swivelling speed	rpm	9.1		
Rubber shoe width	mm	230		
Tumbler distance	mm	1090		
Dozer size (width × height)	mm	990 / 1240 × 230		
Hydraulic pumps	P1, P2	Variable displacement pump		
	Flow rate	ℓ / min	16.6	
	Hydraulic pressure	MPa (kgf/cm ²)	20.6 (210)	
	P3	Gear Type		
	Flow rate	ℓ / min	10.4	
	Hydraulic pressure	MPa (kgf/cm ²)	20.1 (205)	
Max. digging force (arm / bucket)	kN (kgf)	7.3 (740) / 12.7 (1300)		
Boom swing angle (left/right)	deg	75 / 60		
Auxiliary circuit	Flow rate	ℓ / min	27	
	Hydraulic pressure	MPa (kgf/cm ²)	20.6 (210)	
Hydraulic reservoir	ℓ	28		
Fuel tank capacity	ℓ	21		
Max. travelling speed (low / high)	km/h	2.1 / 3.8		
Ground contact pressure (cabin / canopy)	kPa (kgf/cm ²)	26.5 (0.27) / 25.5 (0.26)		
Ground clearance	mm	160		
Noise level	LpA	dB (A)	76	
	LwA (2000/14/EC)	dB (A)	93	
Vibration* ³	Hand arm system (ISO 5349-2:2001)	Digging	m/s ² RMS	<2.5
		Levelling	m/s ² RMS	<2.5
		Driving	m/s ² RMS	<2.5
		Idling	m/s ² RMS	<2.5
	Whole body (ISO 2631-1:1997)	Digging	m/s ² RMS	<0.5
		Levelling	m/s ² RMS	<0.5
		Driving	m/s ² RMS	<0.5
		Idling	m/s ² RMS	<0.5

*¹ With 32.5 kg standard bucket ready for operation.

*² Machine weight includes 75 kg operator.

*³ These values are measured under specific conditions at maximum engine speed and can deviate, depending on the operating status.

WORKING RANGE



950 mm arm
Unit: mm

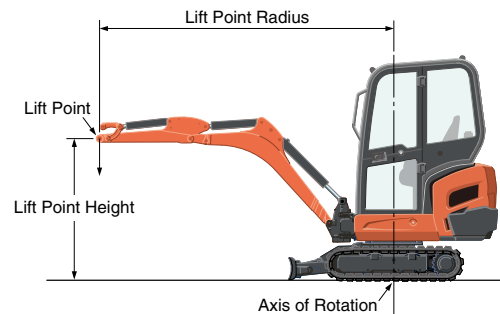
LIFTING CAPACITY

Cabin, Rubber version

Lift Point Height	Lifting point radius (2m)			Lifting point radius (max.)			kN (ton)
	Over-front		Over-side	Over-front		Over-side	
	Blade Down	Blade UP		Blade Down	Blade UP		
1.5m	3.0 (0.30)	3.4 (0.35)	3.4 (0.35)	-	-	-	
1.0m	4.5 (0.46)	3.6 (0.37)	3.5 (0.36)	-	-	-	
0.5m	5.4 (0.55)	3.4 (0.34)	3.3 (0.34)	2.6 (0.27)	1.7 (0.17)	1.7 (0.17)	
0m	5.3 (0.54)	3.2 (0.33)	3.2 (0.33)	-	-	-	

*The lifting capacities are based on ISO 10567 and do not exceed 75% of the static tilt load of the machine or 87% of the hydraulic lifting capacities of the machine.

**The excavator bucket, hook, sling and other lifting accessories are not included on this table.



* Working ranges are with Kubota standard bucket, without quick coupler.

* Specifications are subject to change without notice for purpose of improvement.

★ All images shown are for brochure purposes only.

When operating the excavator, wear clothing and equipment in accordance to local legal and safety regulations.

KUBOTA EUROPE S.A.S.

19 à 25, rue Jules Verceyryse
Zone Industrielle - B.P. 50088
95101 Argenteuil Cedex France
Téléphone : (33) 01 34 26 34 34
Télécopieur : (33) 01 34 26 34 99

KUBOTA (U.K.) LTD

Dormer Road, Thame, Oxfordshire,
OX9 3UN, U.K.
Phone : 01844-268140
F a x : 01844-216685

KUBOTA Baumaschinen GmbH

Steinhauser Straße 100
D-66482 Zweibrücken Germany
Telefon : (49) 0 63 32 - 487 - 312
F a x : (49) 0 63 32 - 487 - 101