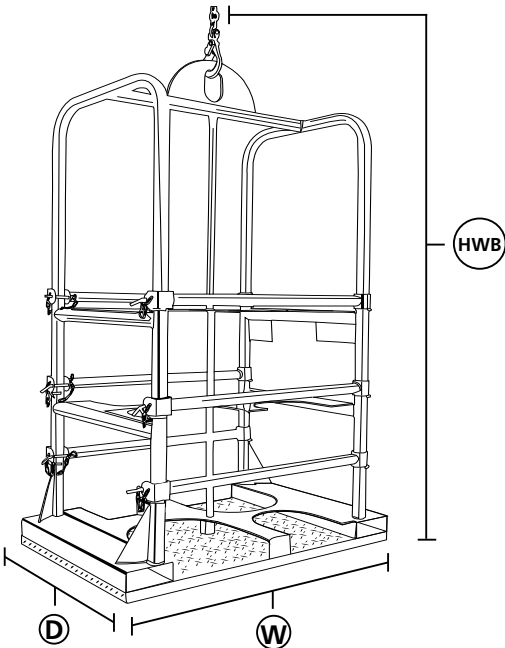


PRODUCT CODE: CA107

PRODUCT DESCRIPTION: GAS BOTTLE CAGES
PRIMARY FUNCTION: FOR THE SAFE TRANSPORTATION OF GAS BOTTLES



The CA107 is a fully approved and certified method of transporting gas bottles on site. Comes with lifting eye and fork pockets for use with both forklift and crane. Fully enclosed for safety.

Other sizes available on request.
Mesh sides and roof available on request.

- CA107-1 designed to hold 4# Oxygen Bottles.
- CA107-2 designed to hold 2# Oxygen & 2# Flammable Bottles
- CA107-3 designed to hold 6# Oxygen Bottles
- CA107-4 designed to hold 1# 47Kg Propane Bottle

Code	HWB mm	D mm	W mm	Weight Kg
CA107-1	1765	470	600	60
CA107-2	1990	1130	750	80
CA107-3	2010	740	930	100
CA107-4	1990	500	710	59

BASIC SAFETY

IMPORTANT: Read these instructions before using this equipment. If there is anything you do not understand or if you have any concerns **DO NOT** use this equipment. Contact your supervisor or Conquip for advice.

You should check that you have considered all the safety requirements for the task you are doing and that this equipment is suitable.

You must protect bystanders and the general public by preventing access to the working area.

DO NOT use this equipment if you are tired, unwell or under the influence of alcohol or drugs. If you are taking any medicine or undergoing treatment you should inform your supervisor.

You must be competent, alert and medically fit when using this equipment. If you have a medical condition, a mental or physical disability, you must seek advice from a medical professional before using this equipment.

A **RISK ASSESSMENT** must be completed by a competent person before using this equipment to control risks, produce a safe system of work and ensure safety for you, your colleagues and others.

Your risk assessment will determine the correct Personal Protective Equipment (PPE) for the task you are doing. You **MUST** use it.

Conquip recommends that you should wear:

- Suitable Clothing
- Gloves
- Hard Hat
- Protective Footwear (steel toecaps)



DO NOT wear loose clothing or jewellery and tie back long hair to avoid becoming tangled or trapped in this equipment.

You **MUST** make everyone in the work area aware of what you are doing. **NO SURPRISES.**

This equipment should be operated, stored and transported upright.

Make sure you know how to use this equipment and understand all aspects of its operation in case of emergency.

This equipment weighs more than 25 kg. **DO NOT** lift or manhandle without machine assistance.

This equipment must be inspected by a competent person before use and then regularly, as determined by your risk assessment or working practice. If you have any concerns about condition or suitability **DO NOT USE.**

DO NOT operate this equipment near overhead power lines.

TAKE CARE in confined spaces, near ceilings or similar hazards. This equipment was designed for vertical lifting. **DO NOT** drag, tilt or swing.

Before lifting, check that the load is balanced and stable. Keep all personnel clear of raised loads and far enough away to allow for movement caused by a shifting load.

CRUSH RISK. Keep hands and feet clear of this equipment at all times to avoid injury.

DO NOT LEAVE UNATTENDED. The operator must remain in control of this equipment whenever it is loaded.

Before lowering a load make sure that the landing zone is clear and capable of accepting the size and weight of the load.

Total weight of the equipment plus the load must not exceed 50% of the forklift WLL.

Manoeuvre loaded or raised equipment carefully. Travel and turn slowly to avoid unit becoming unstable.

Please distribute the load in this equipment evenly.

DO NOT exceed the maximum safe working load shown on the serial plate.

Before lifting, forks must be fully engaged and the security chain or heel pins must be correctly fitted.

HEAD, HANDS & FEET must be kept clear.

Trucks used for lifting and moving this equipment must be capable of lifting the equipment and its load.

DO NOT exceed **WORKING LOAD LIMIT.**

Before operating this equipment make sure that the working area is clear of hazards, obstructions and personnel

Check that the equipment has the correct load rating and dimensions for the intended load.

Before operating this equipment, check that you have enough space for you to work safely. Allow space for the equipment to move if the load shifts.

SET UP

Always double check that the gas bottle carrier is balanced and stable and that personnel stand clear of the raised load.

All personnel including authorised bystanders must not be allowed under a raised gas bottle carrier or close enough to be at risk if the load shifts.

When lowering the gas bottle carrier ensure that the landing area is unobstructed and capable of accepting the gas bottle carrier both in size and weight.

It is important that the weight of the gas bottle carrier added to the weight of its contents, is not more than half (50%) of the forklift's maximum WLL.

When manoeuvring the forklift with the gas bottle carrier attached, keep to a slow speed and **DO NOT** turn quickly. Fast speeds and quick manoeuvres may cause the unit to become unstable.

DO NOT exceed the gas bottles carrier's maximum safe working load as shown on the unit's serial plate.

Make sure that the forks are fully engaged and the heel pins are correctly fitted.

Keep your hands, feet and head clear of the gas bottle carrier when raised.

You must only attach this equipment to lifting devices capable of bearing its weight plus its load.

PREPARATION

Ensure that the work area is clear of all obstructions.

Ensure there is adequate room around the unit for the operator to work safely.

USING WITH A FORKLIFT

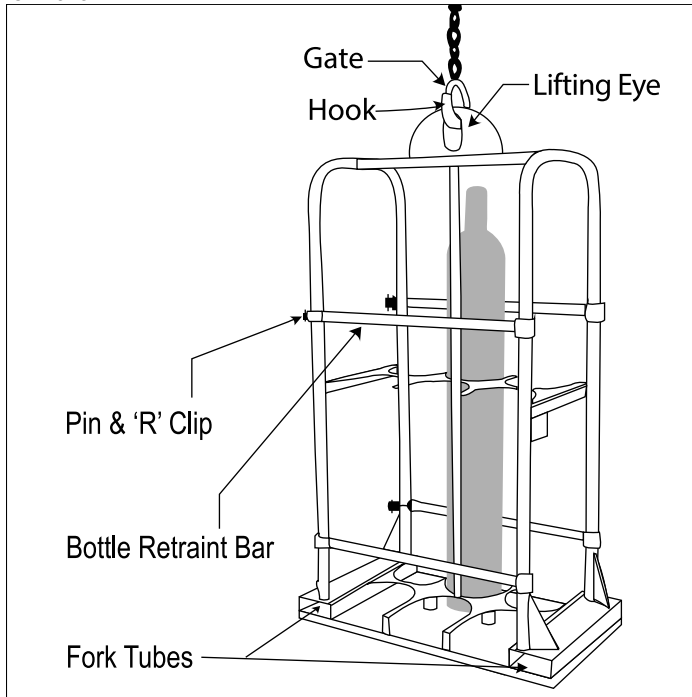
Set the forklift's forks to the correct width for the carrier's fork tubes. Make sure that they are equidistant from the centre.

Drive the forklift to the carrier aligning the forks with the carrier's tubes. Double check that all is correctly aligned, then move the forklift forward until the forks are fully inserted into the tubes.

Switch off the forklift's engine.

Note: The gas bottle carrier is not fitted with heel pins and will slide off of the forks if loaded incorrectly or allowed to tilt

forward.



USING WITH A CRANE

Attach the lifting equipment's hook to the gas bottle carrier's lifting eye. Always ensure that the hook's gate is correctly closed and the lifting eye is seated correctly in the hook.

LOADING THE CARRIER

Before loading the gas bottle carrier it must be positioned on firm level ground.

DO NOT load any cylinder that is leaking, has its valve open or shows signs of damage.

Remove the 'R' clip and pins retaining the bottle restraint bar

to the front of the gas bottle carrier. Open each bottle restraint bar fully and proceed to load in a uniform manner ensuring the weight is evenly distributed.

DO NOT load with cylinders that are taller than the frame or shorter than the height of the lowest bottle restraint bar. Close all bottle restraint bars and replace all pins and 'r' clips.

LIFTING AND LOWERING

You can now carefully raise the carrier just off the ground and check for balance and security.

If all is OK proceed to move the load to its required position. Move slowly and carefully; do not jolt the load.

When in position, lower the load on to firm level ground.

RESTRICTIONS OF USE

The carrier is transporting LPG cylinders only.

DO NOT use to raise or transport personnel.

FINALLY

Having lowered the carrier to the ground, fully unload it, ensuring that the bottle restraint bars are securely locked shut. If you have finished with the carrier, detach it from the lifting equipment.

All that remains is to give the unit a thorough clean before return.

EQUIPMENT MAINTENANCE AND CLEANING

When not being used, store the unit in a clean condition and in a safe place where it will be protected from thieves and unauthorised users.

NOTE: FAILURE TO CLEAN THIS EQUIPMENT THOROUGHLY MAY RESULT IN A CHARGE.

WARRANTY

Conquip Engineering Group products are covered by a 12 month warranty. Conquip Engineering Group undertakes to replace or repair, free of charge, any defect which the Company considers to be due to faulty workmanship or material within 12 months of the sale date, except for:

Defects arising from neglect, misuse or unauthorised modifications.

Damage caused by abuse, misuse, dropping or other similar damage caused by or as a result of failure to follow transportation, storage, loading, cleaning or operation instructions.

Alterations, additions or repairs carried out by persons other than Conquip Engineering Group or their recognised distributors. Transportation or shipment costs to and from Conquip Engineering Group or their recognised agents, for repair or assessment against a warranty claim, on any product or component.

Materials and/or labour costs to renew, repair or replace components due to fair wear and tear.

Faults arising from the use of non-standard or additional parts, or any consequential damage or wear caused by the fitting or use of such parts.

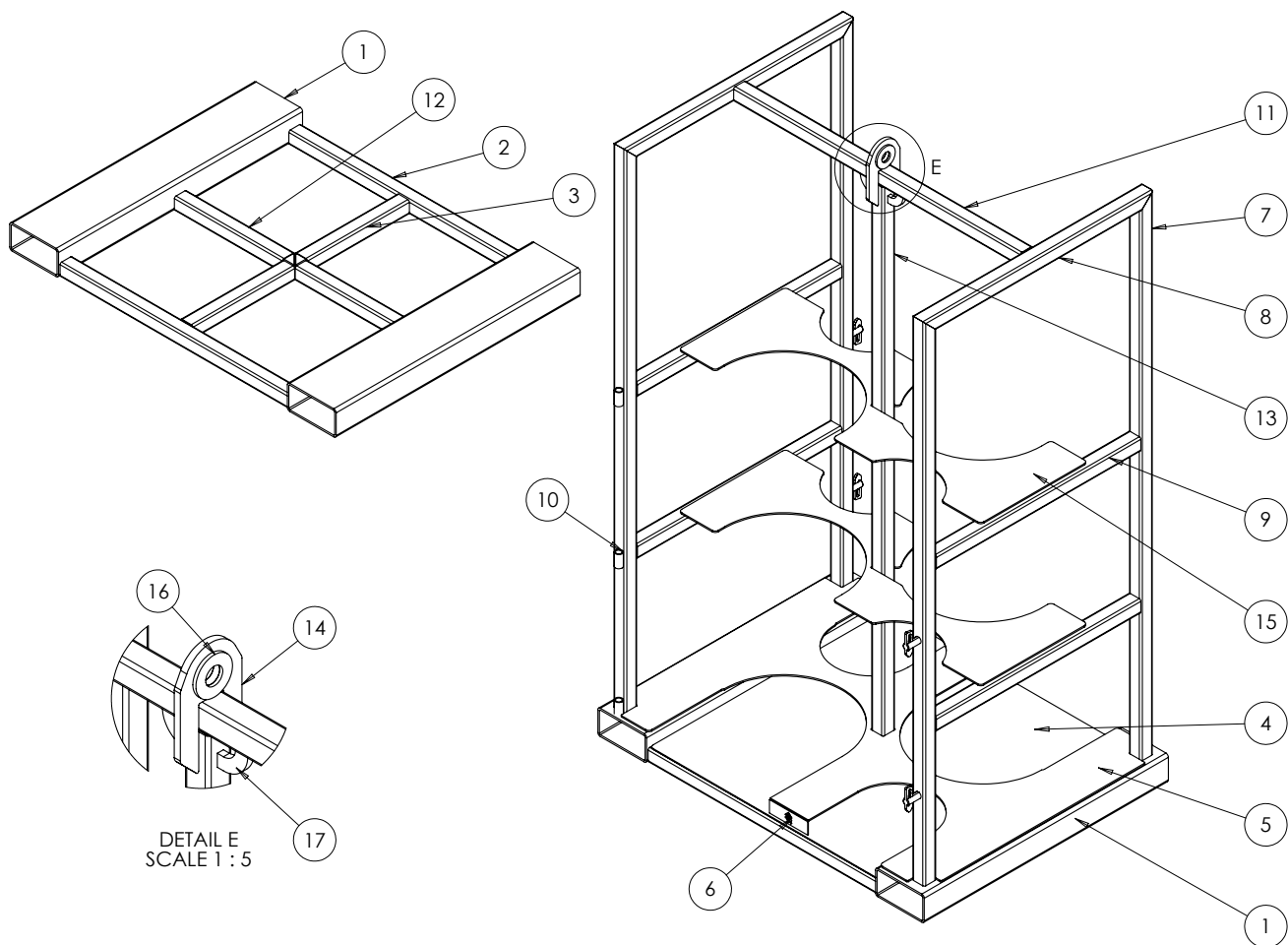
Conquip Engineering Group and/or our recognised agents, directors, employees or insurers will not be held liable for consequential or other damages, losses or expenses in connection with, or by reason of, or the inability to use the product for any purpose.

MODIFICATIONS

If any third party work, modifications or alterations are to be carried out on the product which will involve any welding, drilling or any form of cutting or distortion of materials, full written approval must be obtained from Conquip Engineering Group prior to the work being carried out.

Conquip Engineering Group operate a policy of constant improvement and reserve the right to change specifications without notice.





ITEM NO	PART NUMBER	DESCRIPTION	QTY
1	CA107-2-01-01	Fork Pocket	2
2	CA107-2-01-02	Front Foot	2
3	CA107-2-01-03	Under Floor Box Section 1 of 2	2
4	CA107-2-01-04	Floor	1
5	CA107-2-01-05	Gas Bottle Base Plate	1
6	CA107-2-01-06	CQ Kick Plate	2
7	CA107-2-01-08	Upright Box Section	4
8	CA107-2-01-08	Top Structural Box Section	2
9	CA107-2-01-09	Horizontal Structural Box Section	4
10	CA107-2-01-10	Door Hinge Bar	6
11	CA107-2-01-11	Top Cross Beam	1
12	CA107-2-01-12	Under Floor Box Section 2 of 2	2
13	CA107-2-01-13	Central Lifting Box Section	1
14	CA107-2-01-14	Lifting Eye	1
15	CA107-2-01-15	Gas Bottle Locating Sheet	2
16	CA107-2-01-16	Lifting Eye Washer	2
17	CA107-2-01-17	Chain Bracket	2
18	Antiloose Fastener	Antiloose Fastener	4

© 2014 Conquip Engineering Group

TO ORDER CALL 0845 520 1101



CONQUIP ENGINEERING GROUP | WATERBROOK ESTATE, ALTON, HANTS, GU34 2UD